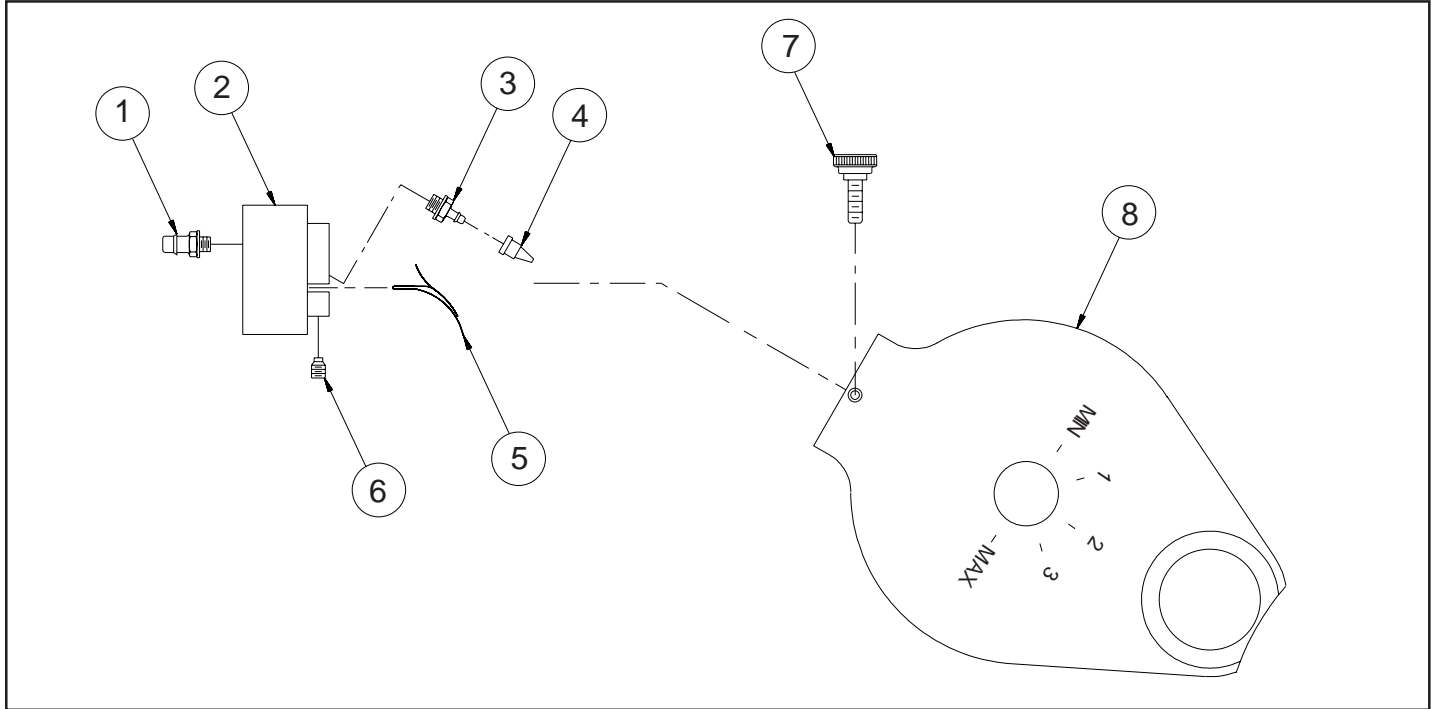


July 26, 2004

UNIVERSAL PROGRAMMABLE INK DELIVERY SYSTEM
PIDS-100, PIDS-200, PIDS-300 & PIDS-400 SERIES

PROGRAMMABLE INK DELIVERY SYSTEM WIPER ADAPTER ASSEMBLY

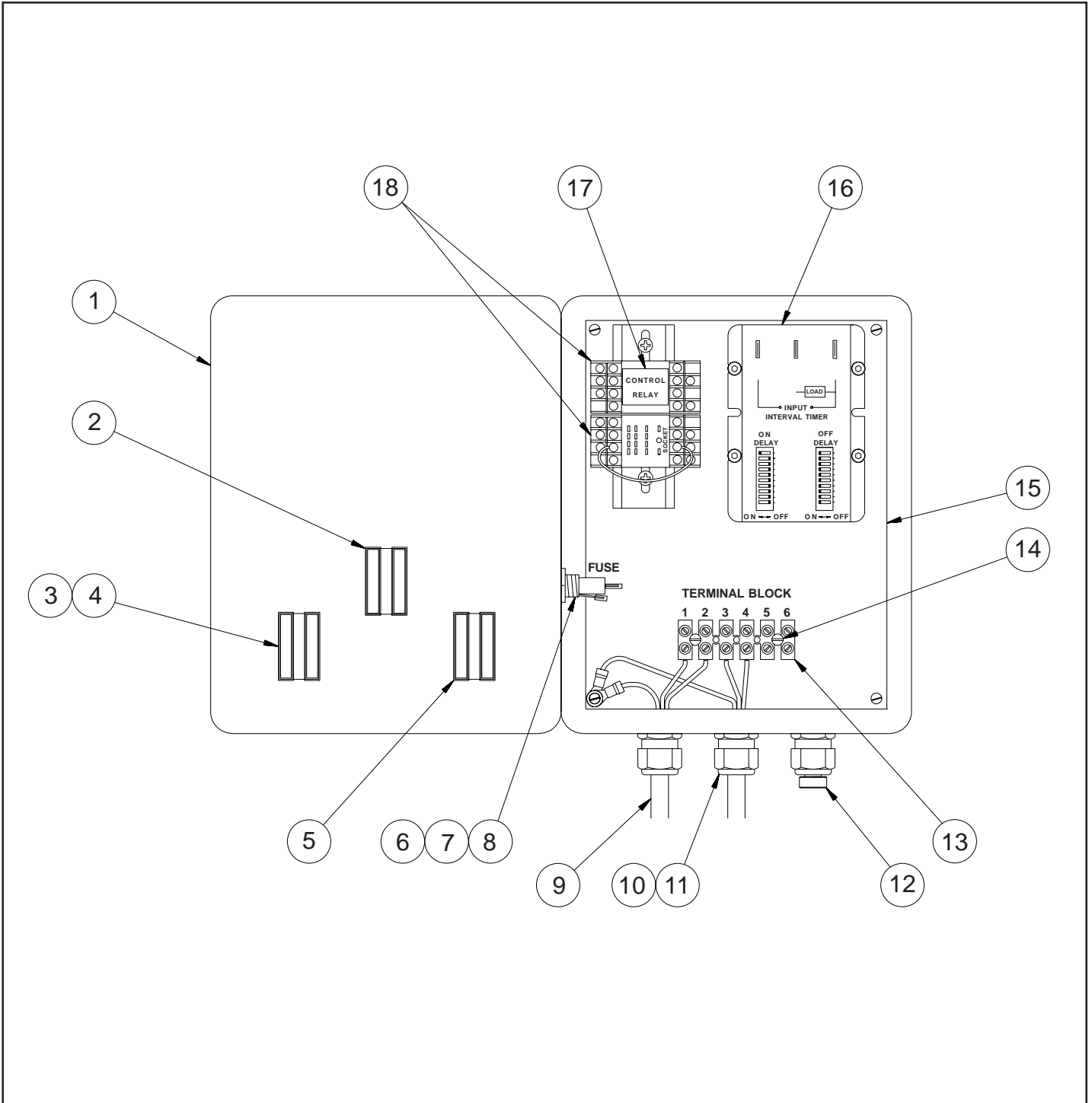


PROGRAMMABLE INK DELIVERY SYSTEM WIPER ADAPTER PARTS LIST

KEY NO.	PART NUMBER	QTY. REQD.	DESCRIPTION
1	MRM-PC-70	1	10-32 BARB FITTING X 1/8" I.D. TUBE
2	PIDS-37	1	WIPER BLOCK FOR 1-1/8" NON-POROUS COVER
	PIDS-38		WIPER BLOCK FOR 2" NON-POROUS COVER
3	MRM-PC-69	1	10-32 BARB FITTING X 1/16" I.D. TUBE
4	PIDS-16	1	CHECK VALVE, DUCK BILL
5	PIDS-35	1	PLASTIC WIPER, 1-1/8" REPLACEMENT
	PIDS-36		PLASTIC WIPER, 2" REPLACEMENT
6	CF-05	2	NYLON TIP SET SCREW, 8-32 THREAD
7	PIDS-48	1	THUMB SCREW ASSEMBLY, 8-32 THREAD
8	PIDS-39	1	NON-POROUS INKING SYSTEM COVER, 1-1/8" CLP, FOR WIPER ADAPTER
	PIDS-42		NON-POROUS INKING SYSTEM COVER, 2" CLP, FOR WIPER ADAPTER
	PIDS-45		NON-POROUS INKING SYSTEM COVER, 1-1/8" L. H. TOP MOUNT MINI-CODER, FOR WIPER ADAPTER
	PIDS-46		NON-POROUS INKING SYSTEM COVER, 1-1/8" R. H. TOP MOUNT MINI-CODER, FOR WIPER ADAPTER
1 - 6	PIDS-WA1		1-1/8" WIPER ADAPTER ASSEMBLY
	PIDS-WA2		2" WIPER ADAPTER ASSEMBLY

KEY NUMBERS (1 - 6) CAN BE ORDERED ASSEMBLED.

PROGRAMMABLE INK DELIVERY SYSTEM CONTROL BOX ASSEMBLY PIDS-100 & PIDS-200 SERIES

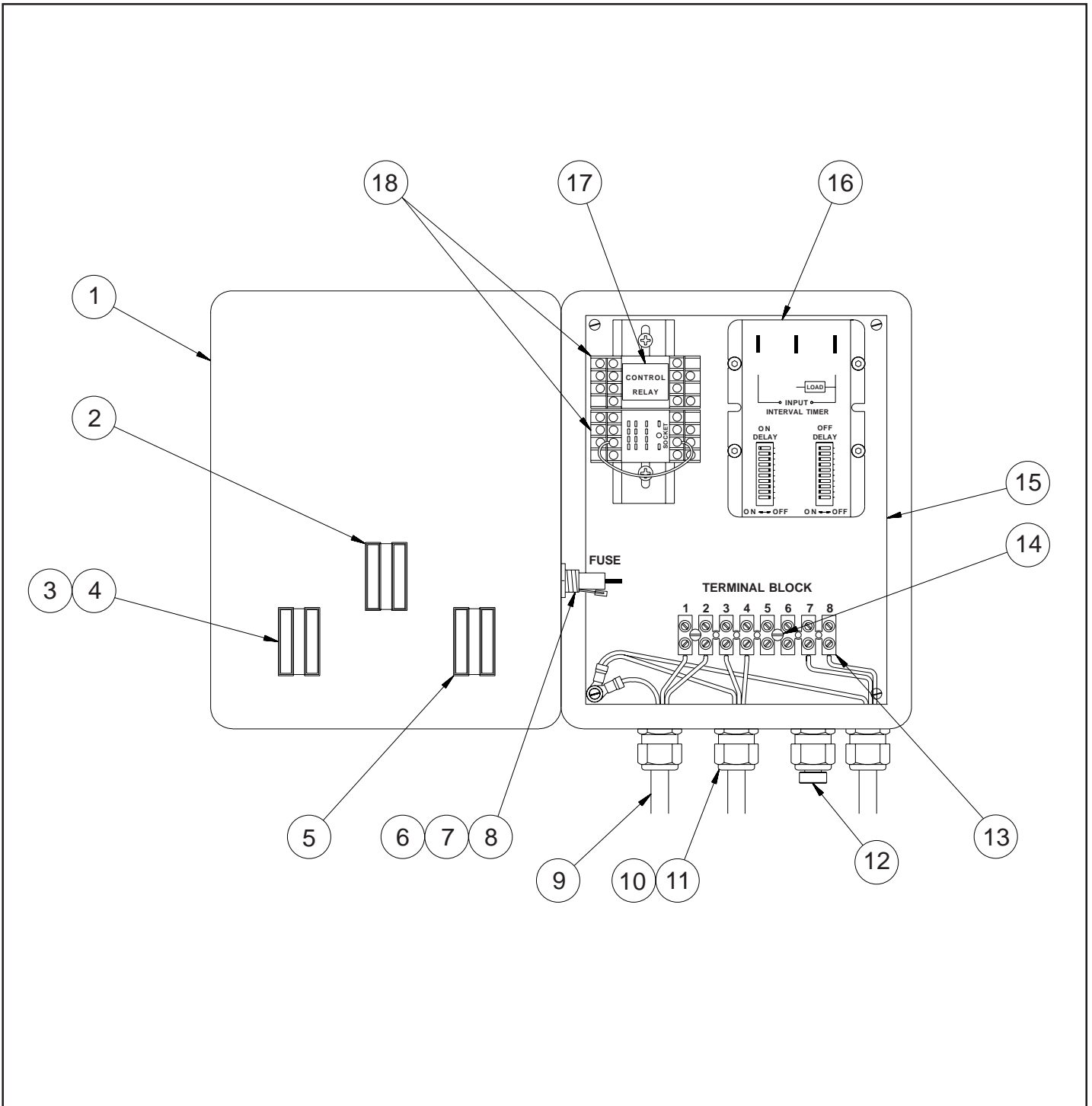


PROGRAMMABLE INK DELIVERY SYSTEM CONTROL BOX PARTS LIST PIDS-100 & PIDS-200 SERIES

KEY NO.	PART NUMBER	QTY. REQD.	DESCRIPTION
1	MRM-EC-52	1	FIBERGLASS ENCLOSURE
2	MRM-EC-34	1	SELECTOR SWITCH, 3 POSITION, BLACK
3	MRM-EC-30	1	ILLUMINATED PUSHBUTTON SWITCH - GREEN
4	MRM-EC-31	1	INCANDESCENT LAMP 120 VAC
5	MRM-EC-33	1	MUSHROOM PUSHBUTTON SWITCH - RED
6	MRM-EC-60	1	FUSE, 0.5 A, US
7	MRM-EC-63	1	FUSE CARRIER, US
8	MRM-EC-62	1	FUSE HOLDER, UNIVERSAL PANEL MOUNT
9	MRM-EC-22	2	POWER CORD ASSEMBLY, 14-3, 8 FEET, WITH MOLDED PLUG
10	MRM-EC-10	3	STRAIN RELIEF - STRAIGHT - THRU FITTING
11	MRM-EC-11	3	NYLON LOCKNUT
12	PIDS-09	1	DELTRIN PLUG FOR STRAIN RELIEF
13	MRM-EC-04	1	TERMINAL BLOCK FOR 6 WIRE CORDAGE - INTERNATIONAL
14	PIDS-15	2	SCREW, 6-32 X 3/4" BH SLOT
15	MRM-EC-53	1	ALUMINUM COMPONENT MOUNTING PANEL
16	MRM-EC-70	1	RECYCLE TIMER .1 - 102.3 MIN. - 110 VAC / 60 Hz
17	MRM-EC-82	1	CONTROL RELAY 4PDT 120 VAC COIL - 14 PIN
18	MRM-EC-85	1	SOCKET BASE FOR CONTROL RELAY - 14 PIN
	*MRM-EC-97	1	LEGEND PLATE, START
	*MRM-EC-98	1	LEGEND PLATE, STOP
	*MRM-EC-99	1	LEGEND PLATE, MANUAL - OFF - AUTO

* ITEM NOT SHOWN

PROGRAMMABLE INK DELIVERY SYSTEM CONTROL BOX ASSEMBLY PIDS-300 & PIDS-400 SERIES



PROGRAMMABLE INK DELIVERY SYSTEM CONTROL BOX PARTS LIST PIDS-300 & PIDS-400 SERIES

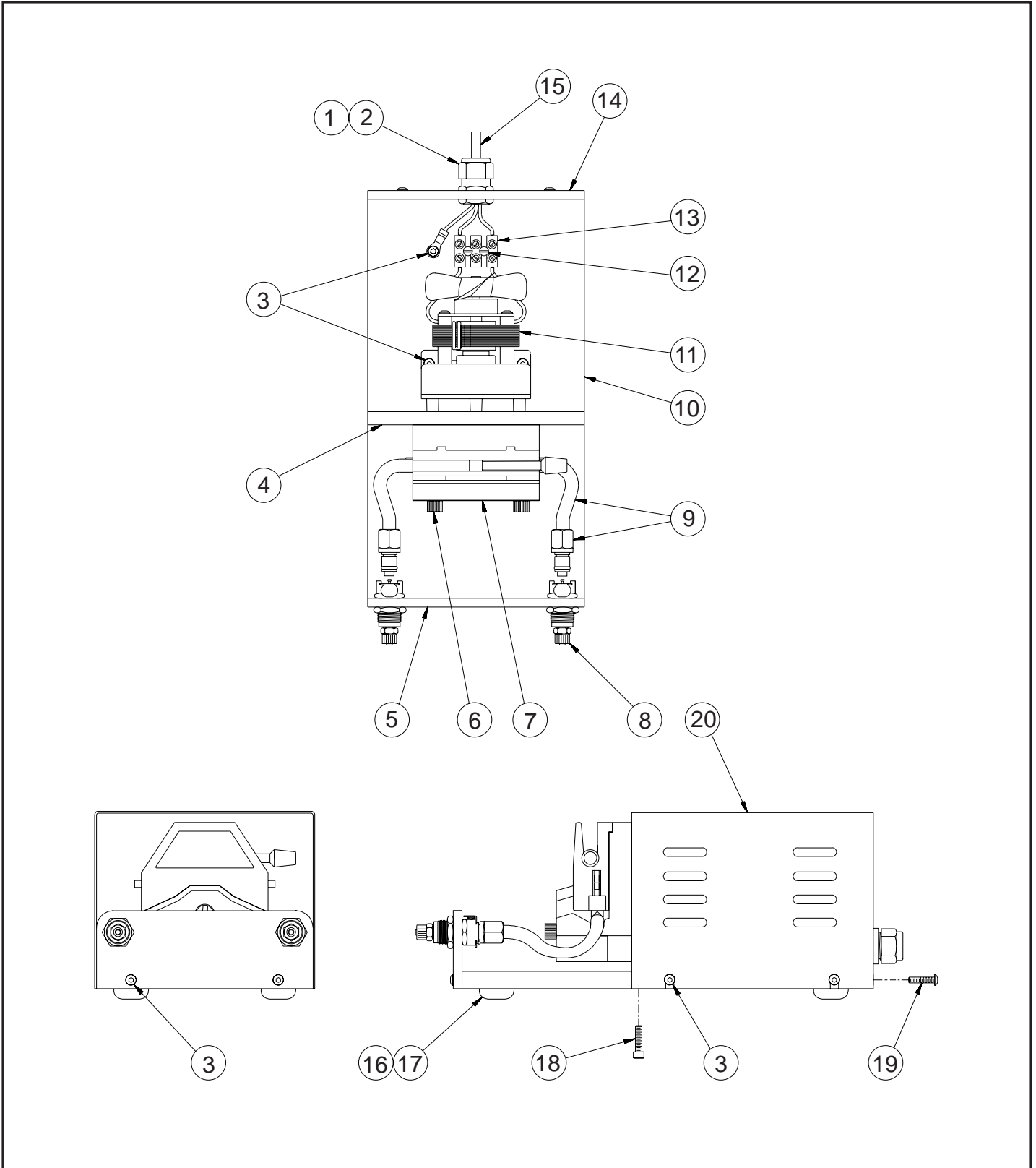
KEY NO.	PART NUMBER	QTY. REQD.	DESCRIPTION
1	MRM-EC-52	1	FIBERGLASS ENCLOSURE
2	MRM-EC-34	1	SELECTOR SWITCH, 3 POSITION, BLACK
3	MRM-EC-30	1	ILLUMINATED PUSHBUTTON SWITCH - GREEN
4	MRM-EC-31	1	INCANDESCENT LAMP 120 VAC
5	MRM-EC-33	1	MUSHROOM PUSHBUTTON SWITCH - RED
6	MRM-EC-60	1	FUSE, .1 A, US
7	MRM-EC-63	1	FUSE CARRIER, US
8	MRM-EC-62	1	FUSE HOLDER, UNIVERSAL PANEL MOUNT
9	MRM-EC-22	2	POWER CORD ASSEMBLY, 14-3, 8 FEET, WITH MOLDED PLUG
10	MRM-EC-10	3	STRAIN RELIEF - STRAIGHT - THRU FITTING
11	MRM-EC-11	3	NYLON LOCKNUT
12	PIDS-09	1	DELTRIN PLUG FOR STRAIN RELIEF
13	MRM-EC-04	1	TERMINAL BLOCK FOR 8 POLE - INTERNATIONAL
14	PIDS-15	2	SCREW, 6-32 X 3/4" BH SLOT
15	MRM-EC-53	1	ALUMINUM COMPONENT MOUNTING PANEL
16	MRM-EC-70	1	RECYCLE TIMER .1 - 102.3 MIN. - 110 VAC / 60 Hz
17	MRM-EC-82	1	CONTROL RELAY 4PDT 120 VAC COIL - 14 PIN
18	MRM-EC-85	1	SOCKET BASE FOR CONTROL RELAY - 14 PIN
	* MRM-EC-97	1	LEGEND PLATE, START
	* MRM-EC-98	1	LEGEND PLATE, STOP
	* MRM-EC-99	1	LEGEND PLATE, MANUAL - OFF - AUTO

* ITEM NOT SHOWN

SINGLE PUMP HEAD MODULE ASSEMBLY

PROGRAMMABLE INK DELIVERY SYSTEM

PIDS-100 & PIDS-300 SERIES



SINGLE PUMP HEAD MODULE PARTS LIST

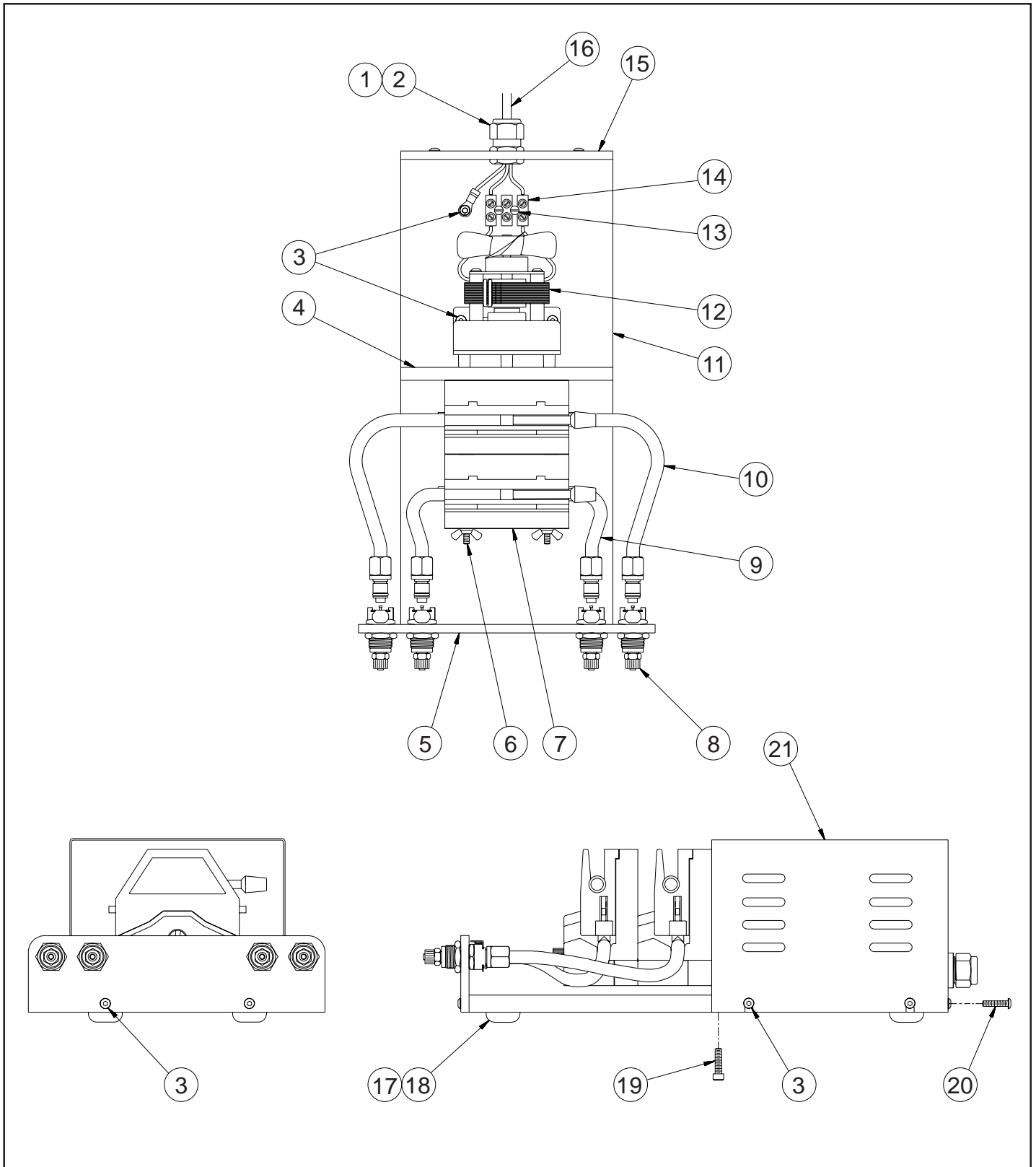
PROGRAMMABLE INK DELIVERY SYSTEM PIDS-100 & PIDS-300 SERIES

KEY NO.	PART NUMBER	QTY. REQD.	DESCRIPTION
1	MRM-EC-10	1	STRAIN RELIEF - STRAIGHT-THRU FITTING
2	MRM-EC-11	1	NYLON LOCKNUT
3	HP-10	9	SCREW, 8-32 X 1/2" BHC
4	PIDS-04	1	PUMP HEAD MOUNTING PLATE
5	PIDS-05	1	PUMP MODULE FRONT PLATE
6	PIDS-47	2	MOUNTING HARDWARE - SINGLE PUMP HEAD
7	PIDS-01	1	EASY LOAD PUMP HEAD
8	PIDS-40	2	QUICK RELEASE COUPLING - PANEL MT BODY
9	PIDS-PTA1	1	PUMP TUBE ASSEMBLY - 12"
10	PIDS-03	1	PUMP MODULE BASE PLATE
11	PIDS-02-115	1	PUMP MOTOR, 6 RPM - 115 VAC / 60Hz
12	PIDS-15	2	SCREW, 6-32 X 3/4" BH SLOT
13	MRM-EC-03	1	TERMINAL BLOCK - 3 POS. INTL.
14	PIDS-06	1	PUMP MODULE BACK PLATE
15	MRM-EC-18	1	CABLE ASSEMBLY, PUMP MODULE 8 FT.
16	5121-709	4	SCREW, 10-32 X 1/2" RH SLOT
17	1199-138	4	RUBBER FOOT
18	PIDS-10	2	SCREW, 10-32 X 3/4" SHC
19	PIDS-17	2	SCREW, 8-32 X 3/4" BHC
20	PIDS-08	1	ALUMINUM COVER FOR PUMP MODULE
	* CT-02	31 FT.	NATURAL POLY 1/4" O.D. TUBE

* ITEM NOT SHOWN

DUAL PUMP HEAD MODULE ASSEMBLY

PROGRAMMABLE INK DELIVERY SYSTEM PIDS-200 & PIDS-400 SERIES



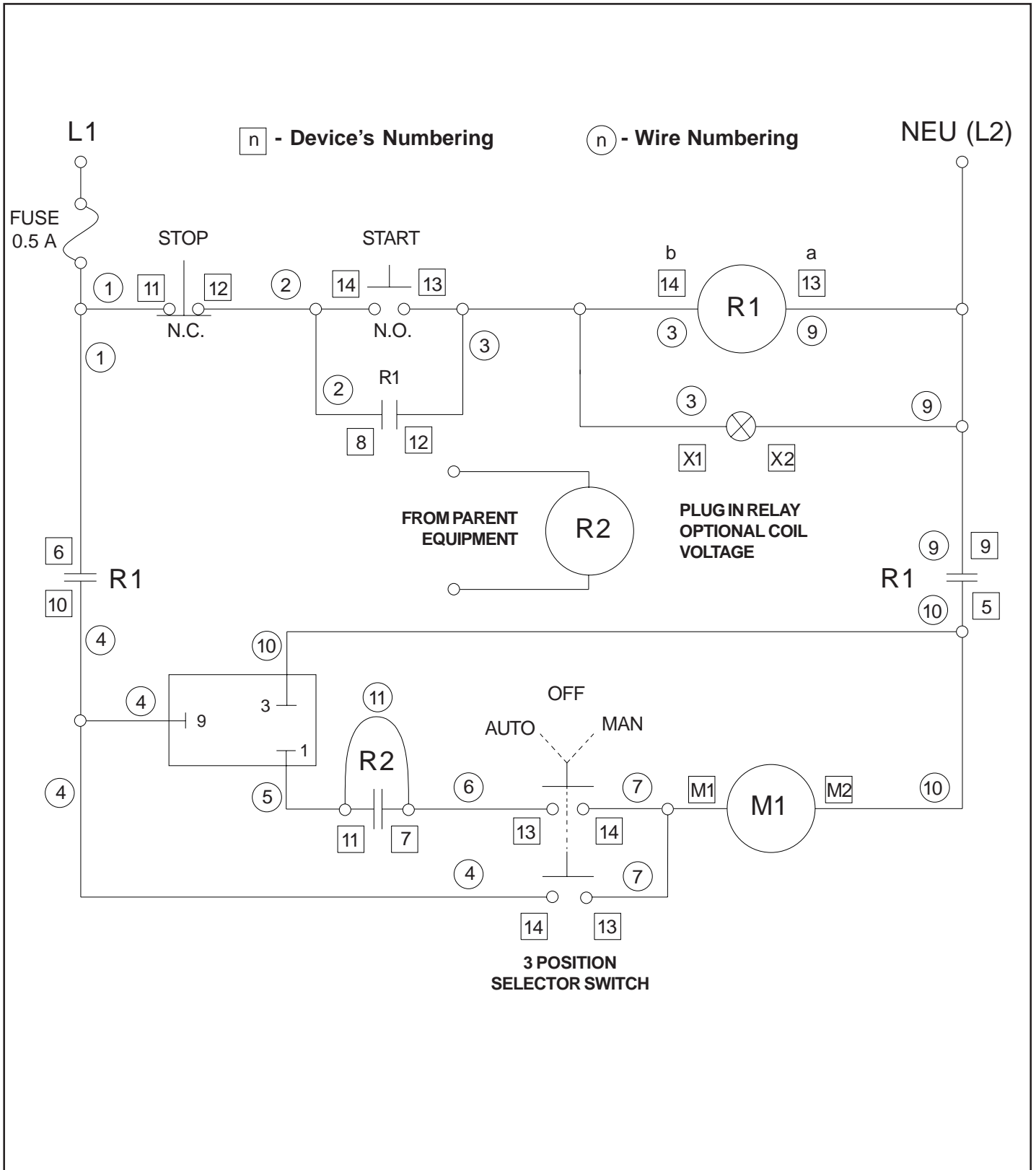
DUAL PUMP HEAD MODULE PARTS LIST
PROGRAMMABLE INK DELIVERY SYSTEM
PIDS-200 & PIDS-400 SERIES

KEY NO.	PART NUMBER	QTY. REQD.	DESCRIPTION
1	MRM-EC-10	1	STRAIN RELIEF - STRAIGHT-THRU FITTING
2	MRM-EC-11	1	NYLON LOCKNUT
3	HP-10	9	SCREW, 8-32 X 1/2" BHC
4	PIDS-04	1	PUMP HEAD MOUNTING PLATE
5	PIDS-13	1	PUMP MODULE FRONT PLATE
6	PIDS-49	2	WING NUT 8-32
	PIDS-50		MOUNTING HARDWARE - SINGLE PUMP HEAD
7	PIDS-01	2	PUMP HEAD, EASY LOAD
8	PIDS-40	2	QUICK RELEASE COUPLING - PANEL MT BODY
9	PIDS-PTA1	1	PUMP TUBE ASSEMBLY - 12"
10	PIDS-PTA2	1	PUMP TUBE ASSEMBLY - 18"
11	PIDS-12	1	PUMP MODULE BASE PLATE
12	PIDS-02-115	1	PUMP MOTOR, 6 RPM - 115 VAC / 60Hz
13	PIDS-15	2	SCREW, 6-32 X 3/4" BH SLOT
14	MRM-EC-03	1	TERMINAL BLOCK - 3 POS. INTL.
15	PIDS-06	1	PUMP MODULE BACK PLATE
16	MRM-EC-18	1	CABLE ASSEMBLY, PUMP MODULE 8 FT.
17	5121-709	4	SCREW, 10-32 X 1/2" RH SLOT
18	1199-138	4	RUBBER FOOT
19	PIDS-10	2	SCREW, 10-32 X 3/4" SHC
20	PIDS-17	2	SCREW, 8-32 X 3/4" BHC
21	PIDS-08	1	ALUMINUM COVER FOR PUMP MODULE
	*CT-02	62 FT.	NATURAL POLY 1/4" O.D. TUBE

*ITEM NOT SHOWN

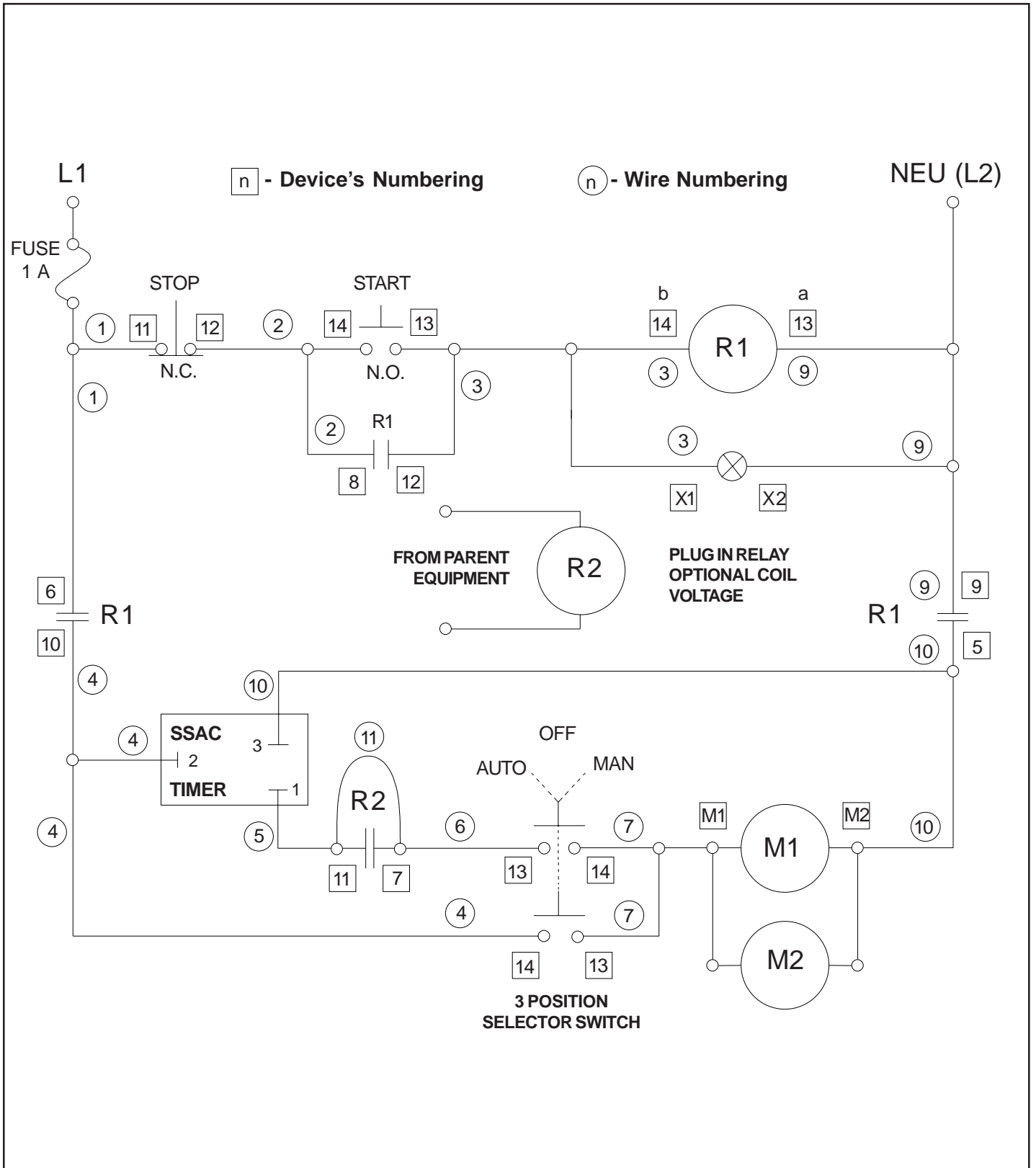
SCHEMATIC WIRING DIAGRAM

PROGRAMMABLE INK DELIVERY SYSTEM PIDS-100 & PIDS-200 SERIES

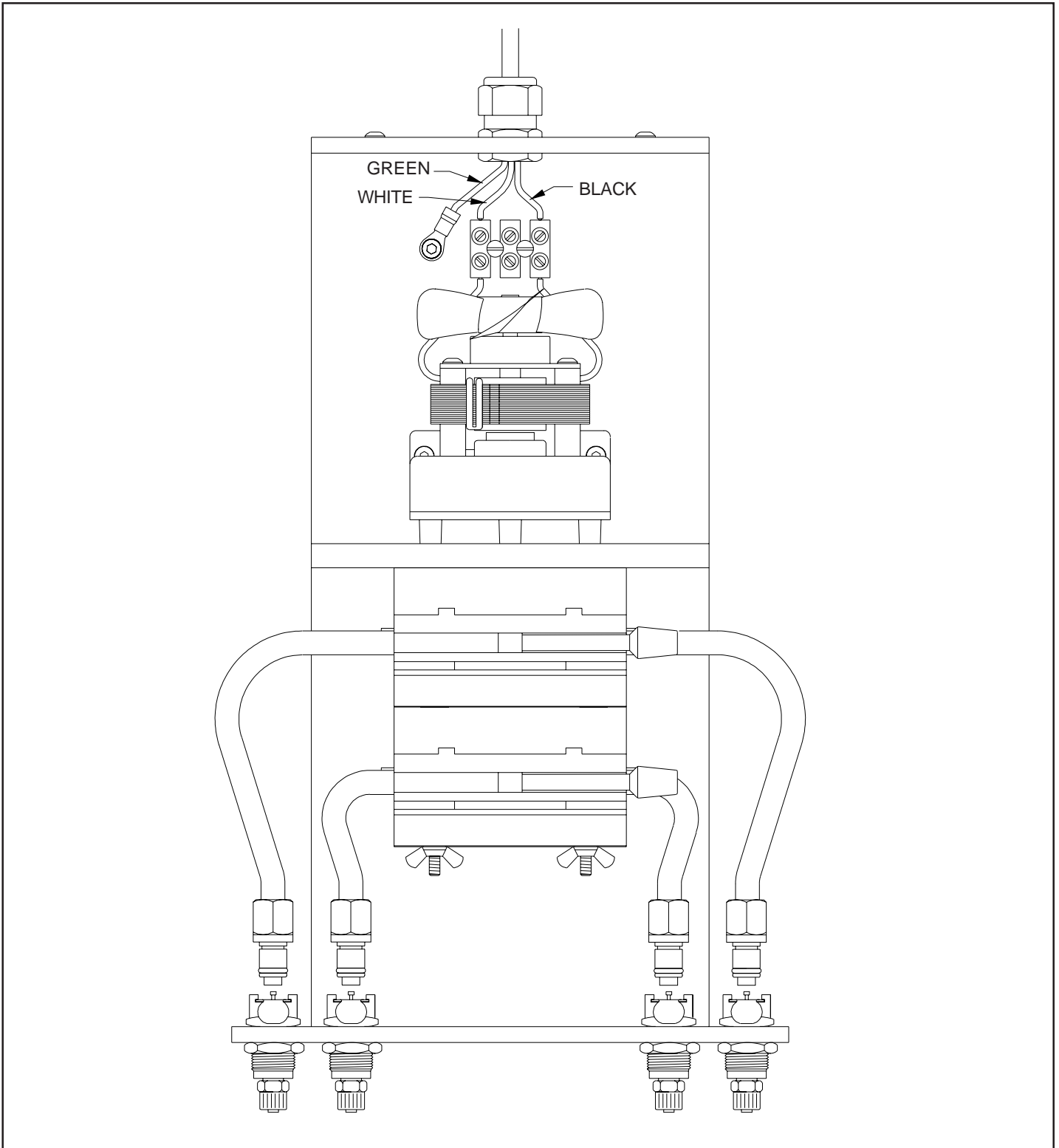


SCHEMATIC WIRING DIAGRAM

PROGRAMMABLE INK DELIVERY SYSTEM PIDS-300 & PIDS-400 SERIES



**PROGRAMMABLE INK DELIVERY SYSTEM
PUMP MODULE CORD CONNECTION**



Universal Stenciling & Marking Systems, Inc.

P.O. Box 871 - St. Petersburg, FL 33731 - U.S.A.

Ph: (727) 894-3027 Fax: (727) 821-7944

E-Mail: sales@universal-marking.com Website: www.universal-marking.com