

THERMOCODE 53E



FEATURES

- 12 dots/mm (300 dpi) resolution
- Self levelling printhead
- All electronic operation
- No mechanical adjustments required for print quality
- Multi-function display
- 1.5MB memory
- Onboard printer diagnostics
- Printer status display
- Multi-level access
- Selectable multi-language facility
- Quality engineered product
- Proven technology
- Full networking capability
- User friendly
- Simple ribbon threading
- Low ribbon warning
- End of ribbon alarm
- Does not use compressed air

THERMAL TRANSFER CODER

An ideal first step into Thermal Transfer coding technology where regular date, batch and price code changes, real time coding, barcodes and/or graphics are required.

Suitable for all intermittent motion packaging and labelling machinery.



THERMOCODE 53E



The Open Date Thermocode 53E thermal transfer coder utilises many of the features of the well proven Series 2 range. It is compact and can be easily installed on to most types of intermittent motion labelling and packaging machinery.

The 53E does not use compressed air and no mechanical levelling or height adjustments are required for print quality. Print pressure, burn values and speed adjustments are all carried out via the display module and individually stored within the print format.

A stepper motor is used to move the printhead down and up. When powered up, the coder detects the surface of the substrate and then moves the printhead to a predetermined position above the substrate which can be altered via the display unit. This feature ensures that the time taken to produce a print will be minimal making the 53E ideal for high speed machinery.

Thermocode printers can be controlled and operated locally from the display module, directly from a PC or laptop or via the Open Date networking facility.

For immediate use, the 53E is supplied pre-loaded with a selection of commonly used print formats along with three fonts, one Bitmap (.sfp) and two True Type (.ttf). These print formats can then be edited and saved via the display module. Should the pre-loaded formats or fonts not be suitable then users can create their own with the optional Codesoft Premier format design software. Additionally Codesoft Premier can be linked to a variety of databases.

As well as the 53E status information being given by the display unit, a number of user outputs are provided to indicate coder fault, ribbon low, broken or out, coder is in operation, etc.

53E SPECIFICATIONS

Print area – max.	53.3 mm x 30 mm
Printhead width	53.3 mm
Printhead resolution	12 dots/mm (300 dpi)
Ribbon width	55 mm
Ribbon capacity	300 m max.
Ribbon diameter	65 mm maximum
Printer weight	5 kg
Cycles per minute	350 maximum
Print speed per second	400 mm maximum
Memory capacity	1.5MB
Supply voltage	115/240 volts AC
Power supply weight	4.5 kg
Baud rate – max.	115,200 bps

THE STANDARD THERMOCODE 53E PACKAGE

The standard 53E package includes;

1. Thermocode 53E printer
2. Power supply (115 or 240v)
3. 1.5 m long printer to power supply cable (3, 5 & 6 m optional)
4. Display module with fixing bracket
5. 3 metre long PC to printer lead
6. RecoverMode printer recovery software
7. Print pad (72 x 72 mm)
8. Roll of wax/resin thermal ribbon
9. Printhead cleaning kit
10. Operating/installation manual



DISPLAY MODULE

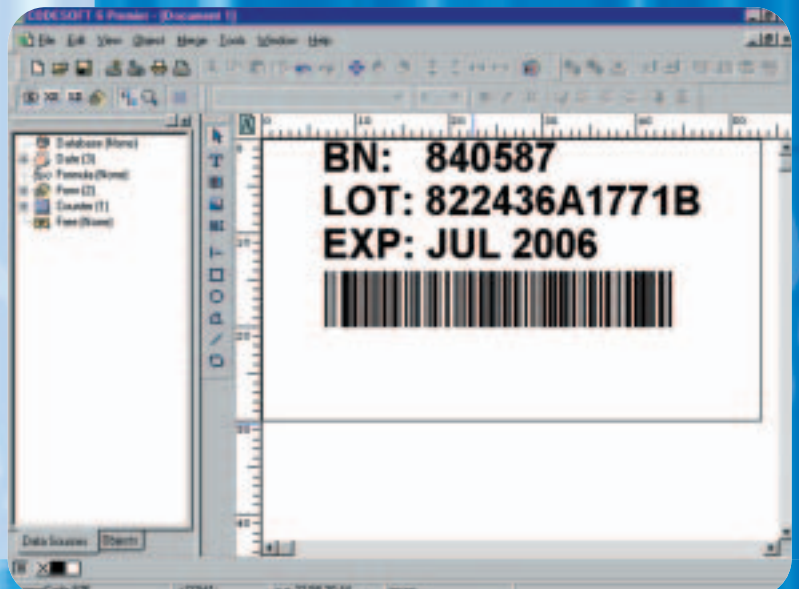
- Print format selection from printer memory
- Format editing with "save as" facility
- On board language selection
- International character insertion facility
- 4 line, 20 character, back lit LCD display
- Optional multi-level password protection
- On board diagnostics including:
 - Printer Status
 - Print count
 - Print head data analysis
 - Low and end of ribbon alarm



THERMOCODE 53E OPTIONS

CODESOFT PREMIER FORMAT DESIGN SOFTWARE

- Design print formats using Windows or printer fonts
- Define fields that can or cannot be edited via the printer's display module
- Create automatically updating counters, date fields, time fields etc. with or without offsets.
- Almost 40 barcode styles available
- Two dimensional barcodes
- Insert graphic images
- WYSIWYG (what you see is what you get) image preview
- Includes a wide selection of industry standard symbols



NETWORKING

Up to 99 printers can be networked together enabling print formats to be sent and updated from a central work station.

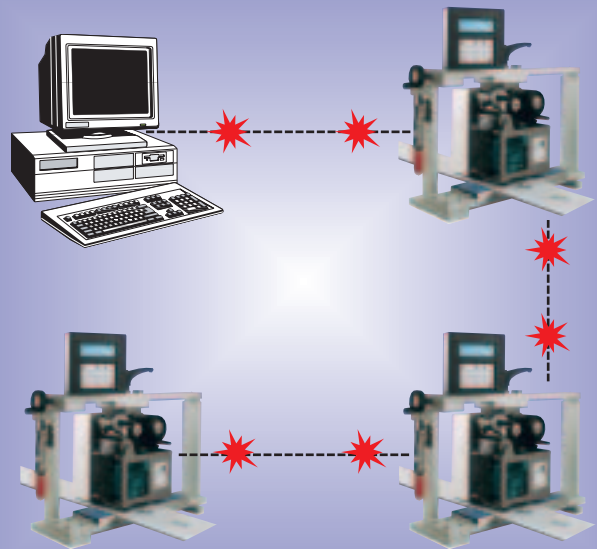
NetMode printer polling software is optional and provides information on the current operating status of each networked printer.

Items Required for Networking

- Master control box (one per network)
- Network connection boxes (one per printer)
- Codesoft Premier software
- Network communication cable

Networking Options

- NetMode printer polling software



MOUNTING FRAMES

Standard Thermocode 53E mounting frames are available in either universal or economy versions. They can be easily adapted to suit most labelling and some packaging machines up to a maximum substrate width of 280 mm.

The tip up design of the standard frames allows access for thermal printhead and print pad cleaning.

Should the standard frame not be suitable then bespoke mountings can be manufactured to order.

THERMAL RIBBON

Open Date thermal transfer ribbon is available in a wide range of sizes, colours and qualities to suit the entire range of Thermocode printers plus most other makes and models. Extended warranty terms apply when Open Date ribbon is used in conjunction with Thermocode printers.



Open Date Equipment Ltd.
Units 8 & 9 Puma Trade Park
145 Morden Road
Mitcham
Surrey, CR4 4DG. U.K.
Tel: +44 (0)20 8655 4999
Fax: +44 (0)20 8655 4990
Email: sales@opendate.co.uk
Web site: www.opendate.co.uk

Open Date Systems, Inc.
Springfield Road, PO Box 538
Georges Mills, NH 03751
U.S.A.
Tel: +(1) 603 763 3444
Fax: +(1) 603 763 4222
Toll free: 877-OPENDATE
Email: info@opendate.com
Web site: www.OpenDate.com

Open Date France
Z.I. D'Attichy
60350 Attichy
France
Tel: +33 (0) 344 42 94 43
Fax: +33 (0) 344 42 17 17
Email: info@opendatefrance.com
Web site: www.opendatefrance.com

Open Date GmbH
Schrägasse 14
97264 Helmstadt
Germany
Tel: +49 (0) 9369 9824 0
Fax: +49 (0) 9369 9824 24
Email: info@opendate.de
Web Site: www.opendate.de